

Ecology Center
Department of Hydrology
University Kiel
lowland creek Kielstau
B.Sc. Kirsten Thiemann



alder trees

sunshine

precipitation

leaves

roots

gravels

sand

shadow



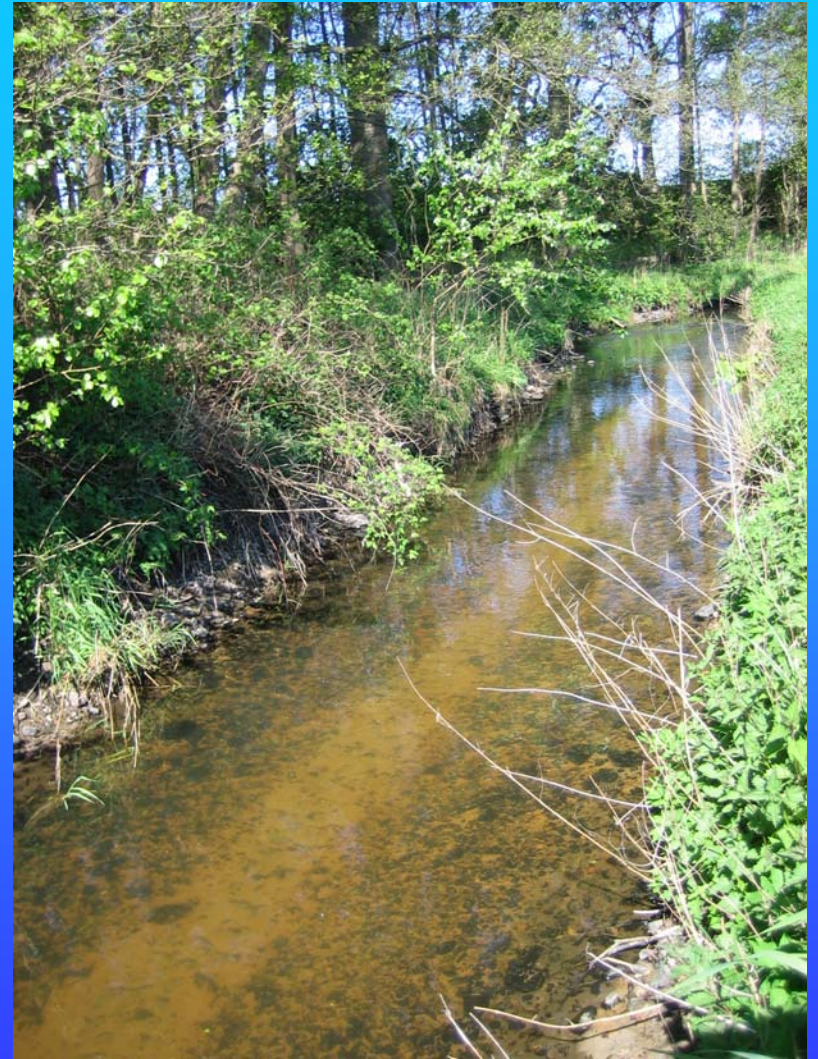
Content:

- Master thesis:
- Geomorphology of a transformed creek
- Measurements of currents
- mapping **Water Framework Directive**
- grain sizes
- mapping of habitats and vegetation
- suggestion for improvements

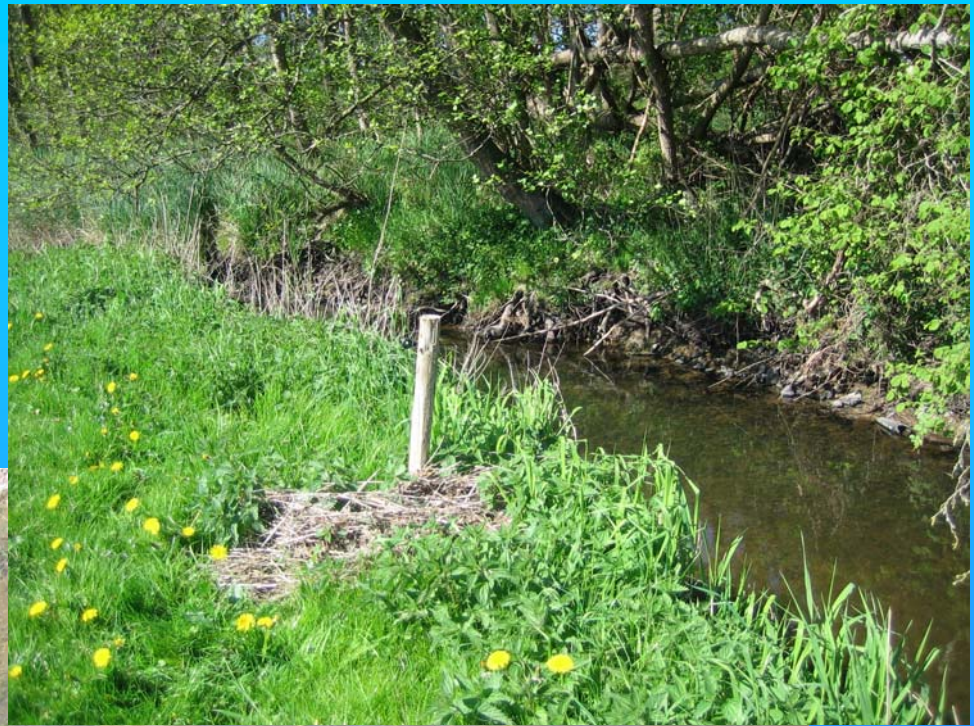
stones



sediments



Dead wood



Macrophytes



Submerged macrophytes



Straightening



Inputs







Georeferencing



Measurement of currents

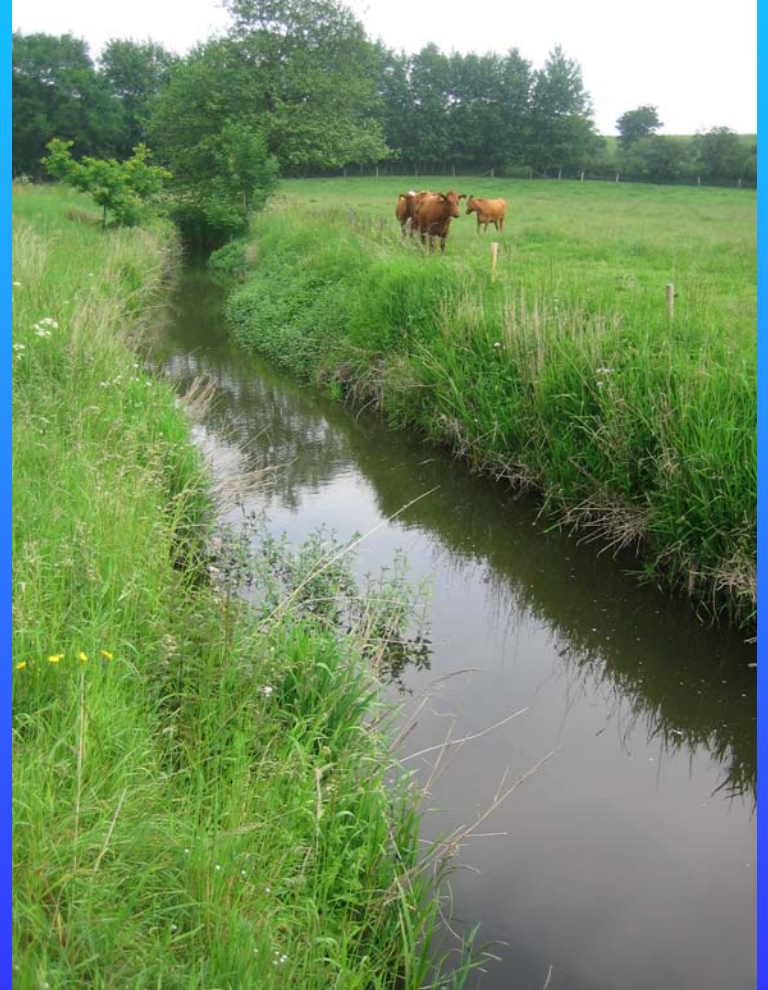








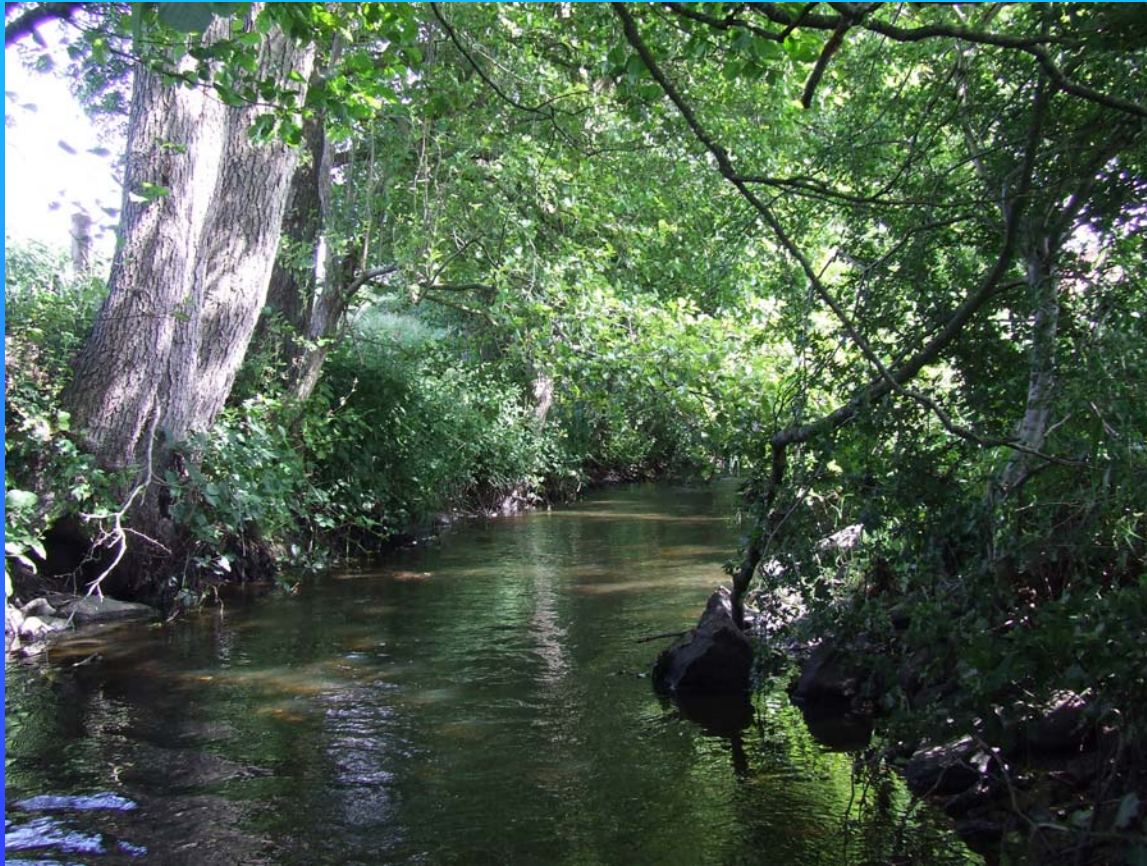
Improvements



Conclusion

- Improvements of the sediment transport
- Shadowing of the water surface
- Enhancing the dynamics
- Enlargement of the banks

Thanks for your attention



Lakes in the hilly landscape of Schleswig-Holstein

